



Preliminary assessment of neck circumference in benign prostatic hyperplasia in patients with metabolic syndrome

Yigit Akin¹, Hakan Gulmez², Erhan Ates³, Mehmet Gulum⁴, Murat Savas⁵

¹ Department of Urology, Harran University School of Medicine, Sanliurfa, Turkey; ² Department of Family Medicine, ¹⁴th Family Healthcare centre, Konya, Turkey; ³ Department of Urology, Necip Fazil State Hospital, Kahramanmaraş, Turkey; ⁴ Department of Urology, Hacettepe University School of Medicine, Ankara, Turkey; ⁵ Department of Urology, Antalya Training and Research Hospital, Antalya, Turkey

ABSTRACT

Objectives: To investigate the impact of neck circumference (NC) in the treatment of benign prostatic hyperplasia (BPH) patients with metabolic syndrome (MtS). Additionally, we determined dose response to alpha-blockers and cut-off values for NC and waist circumference (WC), in these patients.

Materials and Methods: Non-randomized, open-labelled, and multi-centre study was conducted between March 2014 and September 2015. The BPH patients were enrolled and were divided into 2 groups: with MtS (Group 1; n=94) and without MtS (Group 2; n=103). Demographic data, anthropometric measurements, blood analyses, uroflowmetric parameters, post voiding residual urine (PVR), prostate volume, quality of life (QoL) index, NC and WC were recorded. Both groups were administered oral alpha-blockers and response to treatment was evaluated. Receiver-operating characteristic (ROC) curves were obtained and significant p was p<0.05.

Results: In total, 197 patients were enrolled with mean age of 60.5±8.1 years. Mean NC and WC were higher in MtS patients (p<0.001). Uroflowmetry parameters and QoL indexes were comparable between groups before treatment. International prostate symptom score, uroflowmetry parameters, and QoL significant improved in Group 2 than Group 1, at 1st and 6th months of treatment with alpha-blockers. Success rate of treatment was significant higher in Group 2 than Group 1 (p<0.001). Cut-off values were 42.5cm and 113.5cm for NC and WC respectively, for response to alpha-blockers in BPH patients with MtS.

Conclusions: MtS can be related with BPH and can negatively affect the response to alpha-blocker treatment. NC can be used for predicting response to alpha-blocker treatment in BPH patients with MtS.

ARTICLE INFO

Keywords:

Prostatic Hyperplasia; Quality of Life; Patients

Int Braz J Urol. 2017; 43: 95-103

Submitted for publication:
March 08, 2016

Accepted after revision:
May 28, 2016

Published as Ahead of Print:
September 08, 2016

INTRODUCTION

Benign prostatic hyperplasia (BPH) is one of the most frequent diseases in aging men (1). Alpha-blockers are the first choice of medical tre-

atment of BPH (2). However, it is still controversial, which patient profile would respond to the alpha-blockers or not (3). Additionally, accurate doses of alpha-blockers are still unknown, in case of comorbidities such as metabolic syndrome

(MtS) (4). Recently, it was established that MtS is one of the causing factors for the development of BPH in aging men (5).

MtS consists of some metabolic risk factors on individuals (6). However, there are several descriptions for MtS, and the criteria of The National Cholesterol Education Program (NCEP) Expert Panel on Detection, Evaluation, and Treatment of High Blood Cholesterol in Adults (Adult Treatment Panel III) (ATP III) is the mostly used (7). According to this guideline, the presence of three of the following risk factors constitute MtS: blood pressure (BP) $\geq 130/85$ mmHg, fasting blood glucose (FBG) ≥ 110 mg/dL, waist circumference (WC) ≥ 102 cm, High-density lipoprotein (HDL)-cholesterol < 40 mg/dL, serum triglycerides (TG) ≥ 150 mg/dL, in one individual. Central/visceral obesity is associated with MtS due to visceral adipose tissue (8). According to NCEP, WC is an indicator of central obesity as well as of visceral adipose tissue (7). The measurement of WC sometimes could be very difficult, time consuming, and an inaccurate measurement could be performed in outpatient clinics. Thus, another easy applicable method of measuring visceral obesity is necessary. The neck circumference (NC) comes into question at this point (9). Previous studies showed the usefulness of NC for determining visceral obesity (10, 11). According to our best knowledge, there is no published study on relationship between NC and BPH in patients with MtS.

We here investigate anthropometric details of BPH patients with MtS: NC and WC and additionally, determined cut-off values of NC, WC to predict response to alpha-blocker treatments.

MATERIALS AND METHODS

Study design

This is a prospective, non-randomized, multi-centre, and open-labelled study. Between March 2014 and September 2015, BPH patients who were admitted at family medicine and urology outpatient clinics were evaluated. Our study was approved by institutional review board. All patients understood aims of the study and also signed consent forms including standards of the

2008 Helsinki declaration and its later amendments or comparable ethical standards. The exclusion criteria were: previous prostate surgery and/or any prostate disease, prostate specific antigen (PSA) > 4 ng/dL, suspicious prostate nodule in digital rectal examination (DRE), urinary infections, any neurologic disease, allergy to any alpha-blockers, and any bladder disease.

Data collection

247 symptomatic BPH patients were included. All patients were administered non-randomized oral alpha-blockers as tamsulosin 0.4mg, alfuzosin XL 10mg, doxazosin XL 8mg, terazosin 5mg or silodosin 8mg. The exclusion criteria were applied and all patients were divided into 2 groups. Group 1 (n=94) consisted of MtS patients and Group 2 (n=103) was consisted of patients without MtS. Demographic data including age, previous operations, comorbidities were recorded. The international prostate symptom score (IPSS), uroflowmetric parameters, post voiding residual urine volume (PVR), PSA, DRE, prostate volume and quality of life index (QoL) were noted. Anthropometric measurements including NC, WC, height, weight, body mass index (BMI) and blood pressure (BP) were recorded. Supine WC was measured at the level of the umbilicus with the patient breathing silently, and NC was measured with head erect and eyes facing forward, horizontally at the upper line of the laryngeal bulge as in the World Health Organization guidelines (9). BP including systolic and diastolic was measured twice, with the second measurement taken 10 min. after the first. The means of BP measurements were recorded.

Blood analysis included FBG (mg/dL), TG (mg/dL), low-density lipid (LDL) (mg/dL), and HDL (mg/dL) and total cholesterol (mg/dL). All blood samples were obtained from the largest antecubital vein, after at least 12h of fasting in the morning. According to NCEP criteria the diagnosis of MtS included: BP $\geq 130/85$ mmHg, FBG ≥ 110 mg/dL, WC ≥ 102 cm, HDL-cholesterol < 40 mg/dL, TG ≥ 150 mg/dL.

IPSS, PSA, maximum flow rate (Qmax) in uroflowmetry, and PVR were recorded before treatment as baseline. These parameters were compa-

red in both groups at the 1st month and 6th month of medical treatment. Success rate was accepted when the IPSS decreased at least 4-6 points (12). The cut-off values were determined by using statistical analyses and the receiver-operating characteristic (ROC) curves were drawn. Besides, we evaluated response to alpha-blockers in terms of the cut-off values for NC and WC, in BPH patients with Mts.

Statistical analyzes

The Statistical package for social sciences (SPSS) for Windows ver. 16.0 (SPSS Inc., Chicago, IL) was used for statistical analyzes and all graphs were provided by the same software program. The independent samples t-tests were employed to compare continuous data, and the One-way ANOVA analyzes of variance were also used for comparisons among groups. Statistical analyzes including ROC curves were performed; statistically significant p was accepted as p<0.05.

RESULTS

Mean age was 60.5±8.1 years and mean BMI was 31.3±5.7kg/m². The demographic data including IPSS, PVR, QoL index, PSA, prostate volume, and antropometric measurements were presented (Table-1). In total, 197 patients (n=94 in Group 1 and n=103 in Group 2) were enrolled into the study. The baseline parameters areshown in Table-2. Age, uroflowmerty parameters and QoL index were comparable between groups except BMI, NC, and WC were significant higher in Group 1 than Group 2 (p<0.001).

IPSS, maximum flow rate in uroflowmery (Qmax), PVR, and QoL were significant more developed in Group 2 than Group 1, at the 1st month of oral alpha-blockers administration (respectively; p=0.03, p=0.03, p=0.04, p=0.005). These are presented in Table-3. Similar significance was determined at 6th month of medical treatment (respectively; p=0.02, p=0.03, p=0.04, p=0.001) (Table-4).

Response to alpha-blockers (elaborated according to used drugs) were evaluated at baseline, 1st and 6th months of treatment by using Qmax, IPSS, PVR and QoL index (Table-5). Silo-

dosin was more effective than other drugs in all patients (Table-5). In view of these, alpha-blockers were 80.9% successful in Group 1 (BPH patients with MtS) and 87.4% successful in Group 2 (BPH patients without MtS) (p<0.001). In total, success was 84.3% with alpha-blockers. Furthermore, according to statistical analyzes, silodosin was more succesful than other alpha-blockers in terms of developing Qmax, IPSS, PVR, and QoL parameters.

The ROC curves were obtained for determination of the cut-off values in terms of success of medical treatment with alpha-blockers. Mean WC was 113.5cm with 94.4% sensitivity and 42.1% specificity, in patients with metabolic syndrome. The area under the curve was "0.83"; p<0.001 (Figure-1A). Mean WC was 91.5cm with 92.3% sensitivity and 52.2% specificity, in Group 2. The area under the curve was "0.86"; p<0.001 (Figure-1B). On the other hand, the mean NC was 42.5cm

Table 1 - Baseline demographic data in all patients (n=197).

Parameters	Mean±SD
Age (years)	60.5±8.1
Height (cm)	168.3±7.2
Weight (cm)	88.2±15
Neck circumference (cm)	39.4±4.4
BMI (kg/m ²)	31.3±5.7
Waist circumference (cm)	104.4±14.9
Prostate volume (cc)	42.2±23.5
Triglyceride(mg/dL)	138.8±68.9
High Density Lipoprotein (mg/dL)	49.3±13.1
Systolic BP (mmHg)	116.2±18.7
Diastolic BP (mmHg)	74±13.2
Fasting blood glucose (mg/dL)	99.3±27.4
Qmax	15±4
Qavg	6.1±3
IPSS	23.4±4.1
PSA (ng/dL)	2.6±1.5
PVR (mL)	73.6±40.9
QoL score	3.5±1.6

Abbreviations: **BMI** = Body mass index; **BP** = Blood pressure; **IPSS** = International prostate symptom score; **Qavg** = Mean flow rate in uroflowmetry; **Qmax** = Maximum flow rate in uroflowmetry; **QoL** = Quality of life; **PSA** = Prostate specific antigen; **PVR** = Post voided urine volume

Table 2 - Comparison of baseline parameters in groups.

Parameters	Group 1 (n=94)	Group 2 (n=103)	P Value
Age	59.6±8.3	61.3±7.8	0.14
BMI	35.2±4.4	27.7±4.3	<0.001*
Neck circumference	42.3±3.1	36.7±3.6	<0.001*
Waist circumference	114.2±11	95.4±12.3	<0.001*
Prostate Volume	42.9±22.5	41.5±24.5	0.67
Qmax	14.6±4.2	15.5±3.8	0.12
IPSS	23.4±3.8	23.5±4.8	0.84
PSA	2.7±1.6	2.6±1.5	0.67
PVR	77.3±39.1	70.2±40.3	0.22
QoL score	3.5±1.6	3.5±1.6	0.95

Abbreviations: **BMI** = Body mass index; **IPSS** = International prostate symptom score; **Qmax** = Maximum flow rate in uroflowmetry; **PSA** = Prostate specific antigen; **PVR** = Post voiding residual urine volume; **QoL** = Quality of life score

* Statistical significant P value

Table 3 - Comparison of uroflowmetry parameters and quality of life index between groups one month after treatment with alpha-blockers.

Parameters	Group 1 (n=94)	Group 2 (n=103)	P Value
Qmax	23.1±4	24.4±4.4	0.03*
IPSS	15.2±4.1	14±4.1	0.03*
PVR	66±32.8	56.1±37	0.04*
QoL score	5.1±1.5	5.7±1.5	0.005*

Abbreviations: **IPSS** = International prostate symptom score; **PVR** = Post voiding residual urine; **Qmax** = Maximum flow rate in uroflowmetry; **QoL** = Quality of life score.

*Statistical significant P value

Table 4 - Comparison of uroflowmetry parameters and quality of life index between groups six months after treatment with alpha-blockers.

Parameters	Group 1 (n=94)	Group 2 (n=103)	P Value
Qmax	23.1±4.3	24.6±4.9	0.02*
IPSS	15.2±4.1	13.9±4.2	0.03*
PVR	65.4±32.4	55.5±37	0.04*
QoL score	5.3±1.4	6.1±1.5	0.001*

Abbreviations: **IPSS** = International prostate symptom score; **PVR** = Post voiding residual urine; **Qmax** = Maximum flow rate in uroflowmetry; **QoL** = Quality of life score.

* Statistical significant P value.

Table 5 - Comparison of response to treatment according to used alpha-blockers.

Parameters	Silodosin 8mg (n=41)	Tamsulosin 0.4mg (n=39)	Alfuzosin XL 10mg (n=39)	Terazosin 5mg (n=38)	Doksazosin XL 8mg (n=40)	P value
Qmax mL/sec. at baseline	14.9±4.2	15±3.9	15±3.8	15.1±3.6	15.1±3.8	0.9
Qmax at 1 st month of treatment	25.9±4.8	24.2±3.8	23.4±3.5	22.7±4.6	22.5±3.7	0.002*
Qmax at 6 th month of treatment	26.4±5.1	24.3±4.5	23.3±3.9	22.6±4.6	22.5±4.2	<0.001*
IPSS at baseline	22.9±4.5	23.7±4.2	23.4±3.6	23.7±4.2	23.5±3.8	0.9
IPSS at 1 st month of treatment	11.7±3.8	14±3.4	14.8±3.5	16.1±4.3	16.5±4	<0.001*
IPSS at 6 th month of treatment	11.2±3.6	13.9±3.3	15.2±3.5	16±4.4	16.4±4.1	<0.001*
PVR at baseline	76.1±38.7	87.3±39	77.6±34.5	75.8±33.7	77.7±34.8	0.6
PVR at 1 st month of treatment	56.8±35.3	67.8±37.6	59.5±35	61.1±34.7	59.1±34.7	0.7
PVR at 6 th month of treatment	55.6±35.1	67.7±38.1	58.6±33.9	60.8±33.9	58.6±35.1	0.6
QoL at baseline	3.7±1.5	3.1±1.7	3.7±1.4	3.2±1.7	3.7±1.6	0.1
QoL at 1 st month of treatment	6.4±1.3	5.5±1.4	5.3±1.5	4.8±1.5	5±1.6	<0.001*
QoL at 6 th month of treatment	6.8±1.2	5.9±1.3	5.5±1.3	5.1±1.4	5.3±1.5	<0.001*

Abbreviations: **IPSS** = International prostate symptom score; **PVR** = Post voiding residual urine volume; **Qmax** = Maximum flow rate in uroflowmetry; **QoL** = Quality of life index.

* Statistical significant P value.

* One way Anova was used to compare values in groups.

with 88.9% sensitivity and 38.2% specificity, in Group 1 (Figure-1C). The area under the curve was "0.87"; $p < 0.001$. Mean NC was 35.7cm with 92.3% sensitivity and 51.1% specificity, in Group 2. The area under the curve was "0.86"; $p < 0.001$ (Figure-1D). In multivariate analyzes, MtS was considered the determinant factor for accurate response to alpha-blocker treatment. The cut-off value for NC was 42.5cm and for WC was 113.5cm for good response to alpha-blockers.

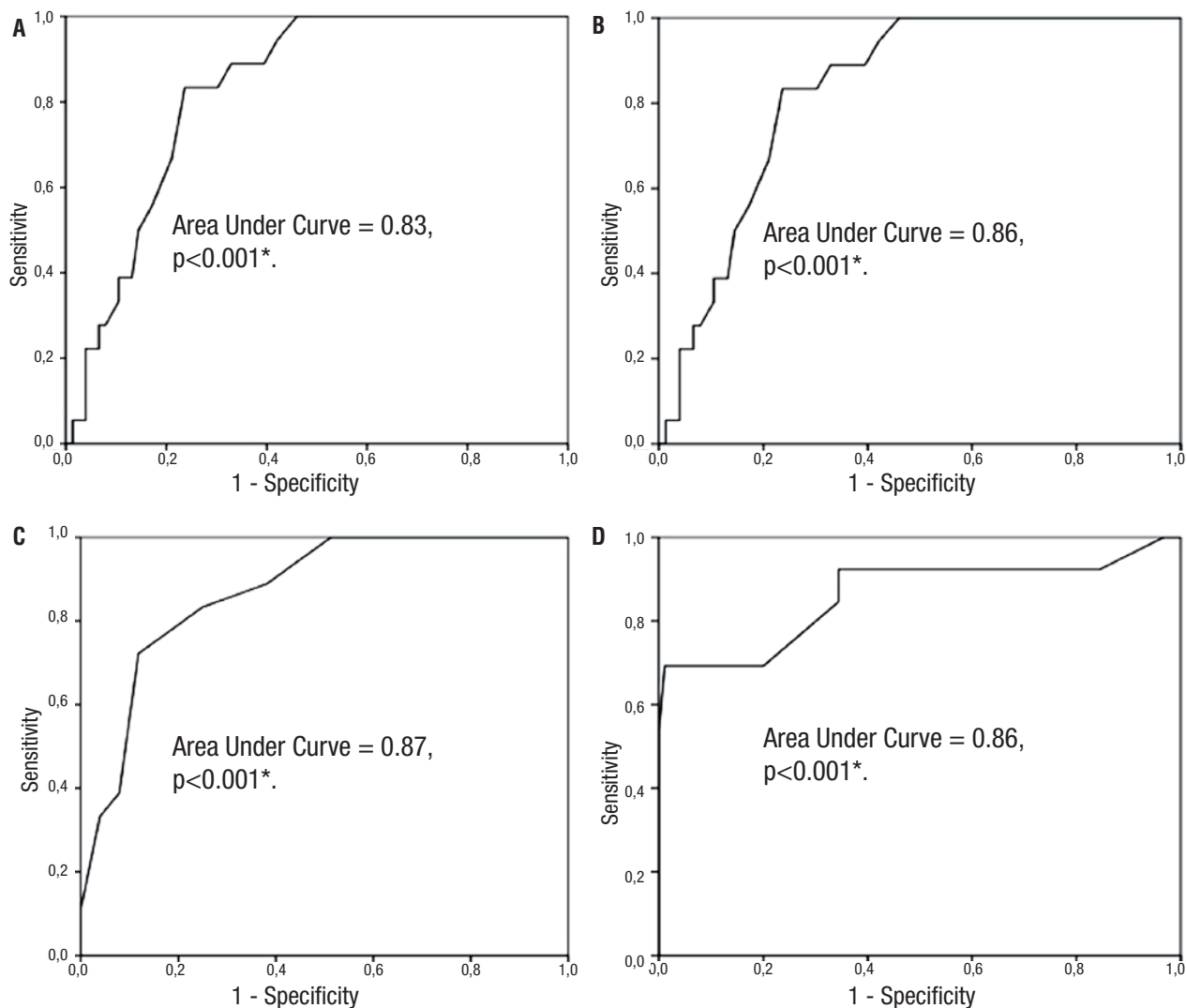
There was no remarkable side effect in both groups. Dizziness and asthenia were the most common side effects. On the other hand, 7 patients using silodosin and 2 patients using tamsulosin

suffered unejaculation. However, all patients carried on medical treatments.

DISCUSSION

MtS is accepted as one of the susceptibility factors for BPH (13, 14). Besides, relationship between BPH and components of MtS including WC was earlier reported (15). The constitute parts of MtS were mentioned above and the WC is one of the essentials among them. WC also depicts visceral obesity. To measure WC sometimes can be very difficult, annoying, and time consuming, notably in the outpatient settings. Thus, NC can

Figure 1 - The cut-off values of neck circumference and waist circumference were drawn with Receiver-operating characteristic curves according to groups. **A**-The cut-off value for waist circumference in benign prostate hyperplasia patients with metabolic syndrome. **B**-The cut-off value for waist circumference in benign prostate hyperplasia patients without metabolic syndrome. **C**-The cut-off value for neck circumference in benign prostate hyperplasia patients with metabolic syndrome. **D**-The cut-off value for neck circumference in benign prostate hyperplasia patients without metabolic syndrome.



be used in these cases. Recently, NC has been reported as a useful diagnostic tool for determining visceral obesity (9-11, 16). In the present study, we evaluated relationship between NC and BPH, in patients with MtS. Additionally, we showed low response to alpha-blockers in BPH patients with MtS. According to our best knowledge, this is the first study in the published literature on this issue including relationship between NC and BPH.

There were significant developments in IPSS, Qmax, QoL, and PVR with oral alpha-blocker treatments in both groups. However, the development was more significant in Group 2 than Group 1. In multivariate analyses, it was assumed MtS the determinant factor for dose response to alpha-blockers. In subgroup analyzes FDG, WC, and NC (with MtS) were more significant factors for dose response. In ROC curve analyzes, cut-off values

were 113.5cm and 42.5cm for WC and NC, respectively, corresponding to good response to medical treatment in BPH patients with MtS. According to One-way-Anova analyzes, Silodosin was a promising molecule for improving lower urinary tract symptoms in MtS patients in terms of developed Qmax, IPSS, PVR and QoL. Roehrborn and Rosen reported increased QoL index with alfuzosin in BPH patients with MtS (17). Our findings were not parallel to their results. On the other hand, Kupelian et al. reported negative effect of MtS on dose response in BPH (18). Cyrus et al. concluded similar findings (5). Findings of the present study agreed with these studies. In our study, all alpha-blockers were effective but silodosin was more effective than other alpha-blockers. This fact may be associated with more selective effects of Silodosin. Nevertheless, oral alpha-blockers were more effective in Group 2 than Group 1. Additionally, NC was significantly shorter in Group 2 than Group 1. Low response to oral alpha-blockers may be caused by endothelial dysfunction, atherosclerosis-induced pelvic ischemia in MtS patients (19). Moreover, He et al. recently reported role of inflammation in MtS patients with BPH (20). Russo et al. pointed same issue that BPH and MtS were significant associated with high grade of inflammation scores including inversely related to intraprostatic heme oxygenase levels and increased metaflammation (21). However, we focused on clinical effects of alpha-blockers in BPH patients with MtS, more molecular based researches are needed for showing accurate pathway that may be subject of another future study in terms of determining more effective molecules in these patients settings.

DiBello et al. reported BPH and MtS association with elevated PSA levels and these could indirectly connect with decreased odds of having MtS and its components (22). On the other hand, Zou et al. reported higher PSA levels in BPH patients with MtS (23). Our findings were not in the same line with DiBello et al. (22) but, were similar with results of Zou et al. (23). There was higher PSA levels in Group 1 than in Group 2 without statistical significance. Increased PSA may be caused by multifactorial reasons including inflammation in the first place (24). Demir et al. recently reported

apoptosis index and inflammation during alpha-blocker usage (25). Besides, it is now well-known that both BPH and MtS includes inflammation (26). Inflammation associated with BPH and MtS can increase PSA levels. However, Alcaraz et al. reported that these associations may be related with prostate cancer formation (27). Nonetheless, there is need of much more well-designed studies for evidence based results on association between elevated PSA and prostate cancer in MtS patients (27).

There were also some side effects during alpha-blocker usage. Dizziness was the most common one. However, there were no differences between groups for side effects. Additionally, none of the patients stopped the medical treatment. One of the annoying side effect was unejaculation which most occurred with silodosin. This was not a reason to stop treatment.

There are some limitations in our study. Low number of patients in groups is one of them. Because of this, some statistical analyzes should be adequately interpreted: despite significant p values in Table-3 and 4, the differences in all their parameters may really be not clinically significant. At this point, to define exact values of response to treatment may be difficult. Additionally, we did not research the molecular mechanism for relationship between MtS and BPH. The goals of the study were relationship between NC and BPH in patients with MtS. Also, the cut-off values for response to contemporary used alpha-blockers were showed, in ROC curves.

Finally, the association between BPH and MtS in terms of measuring WC and NC was presented. We could show that the presence of 43cm or higher NC could be associated with low response to alpha-blocker in BPH patients with MtS. Our results should be verified in future studies with a high number of patients. According to our best knowledge, this is the unique work in the published literature.

CONCLUSIONS

MtS can be related to BPH and can negatively affect response to alphablocker treatment. NC can be used for predicting response to alpha-

-blocker treatment in MtS patients with BPH. NC of at least 43cm and/or above can be associated with low response to alpha-blocker treatment in patients with MtS. Thus, NC is a promising measurement that can show visceral obesity and response to medical treatment in BPH patients with MtS. More well-designed studies with high numbers of patients are needed for more accurate results on this issue.

ABBREVIATIONS

NC = neck circumference
 BPH = benign prostatic hyperplasia
 MtS = metabolic syndrome
 WC = waist circumference
 QoL = Quality of Life
 ROC = Receiver-operating characteristic

CONFLICT OF INTEREST

None declared.

REFERENCES

- [No authors]. American Urological Association Guideline: Management of Benign Prostatic Hyperplasia (BPH). Available at <https://www.auanet.org/education/guidelines/benign-prostatic-hyperplasia.cfm>
- Gratzke C, Bachmann A, Descalzeaud A, Drake MJ, Madersbacher S, Mamoulakis C, et al. EAU Guidelines on the Assessment of Non-neurogenic Male Lower Urinary Tract Symptoms including Benign Prostatic Obstruction. *Eur Urol*. 2015;67:1099-109.
- Akin Y, Gulmez H, Ucar M, Yucel S. The effect of first dose of tamsulosin on flow rate and its predictive ability on the improvement of LUTS in men with BPH in the mid-term. *Int Urol Nephrol*. 2013;45:45-51.
- Parsons JK. Modifiable risk factors for benign prostatic hyperplasia and lower urinary tract symptoms: new approaches to old problems. *J Urol*. 2007;178:395-401.
- Cyrus A, Kabir A, Goodarzi D, Talaei A, Moradi A, Rafiee M, et al. Impact of metabolic syndrome on response to medical treatment of benign prostatic hyperplasia. *Korean J Urol*. 2014;55:814-20.
- Deen D. Metabolic syndrome: time for action. *Am Fam Physician*. 2004;69:2875-82.
- [No authors]. Expert Panel on Detection, Evaluation, and Treatment of High Blood Cholesterol in Adults. Executive Summary of The Third Report of The National Cholesterol Education Program (NCEP) Expert Panel on Detection, Evaluation, And Treatment of High Blood Cholesterol In Adults (Adult Treatment Panel III). *JAMA*. 2001;285:2486-97.
- Alberti KG, Eckel RH, Grundy SM, Zimmet PZ, Cleeman JI, Donato KA, et al. International Diabetes Federation Task Force on Epidemiology and Prevention; National Heart, Lung, and Blood Institute; American Heart Association; World Heart Federation; International Atherosclerosis Society; International Association for the Study of Obesity. Harmonizing the metabolic syndrome: a joint interim statement of the International Diabetes Federation Task Force on Epidemiology and Prevention; National Heart, Lung, and Blood Institute; American Heart Association; World Heart Federation; International Atherosclerosis Society; and International Association for the Study of Obesity. *Circulation*. 2009;120:1640-5.
- Yang GR, Yuan SY, Fu HJ, Wan G, Zhu LX, Bu XL, et al. Neck circumference positively related with central obesity, overweight, and metabolic syndrome in Chinese subjects with type 2 diabetes: Beijing Community Diabetes Study 4. *Diabetes Care*. 2010;33:2465-7.
- Akin Y, Gulmez H, Bozkurt A, Nuhoglu B, Usta MF. Usage of neck circumference as novel indicator of erectile dysfunction: a pilot study in Turkish population. *Andrologia*. 2014;46:963-70.
- Akin Y, Gulmez H, Savas M, Aykan S, Onder O, Yucel S. Relationship between neck circumference and overactive bladder in women with metabolic syndrome: a preliminary study. *Wien Klin Wochenschr*. 2015.
- Emberton M, Cornel EB, Bassi PF, Fourcade RO, Gómez JM, Castro R. Benign prostatic hyperplasia as a progressive disease: a guide to the risk factors and options for medical management. *Int J Clin Pract*. 2008;62:1076-86.
- Parsons JK, Sarma AV, McVary K, Wei JT. Obesity and benign prostatic hyperplasia: clinical connections, emerging etiological paradigms and future directions. *J Urol*. 2013;189:S102-6.
- Kwon H, Kang HC, Lee JH. Relationship between predictors of the risk of clinical progression of benign prostatic hyperplasia and metabolic syndrome in men with moderate to severe lower urinary tract symptoms. *Urology*. 2013;81:1325-9.
- Lee RK, Chung D, Chughtai B, Te AE, Kaplan SA. Central obesity as measured by waist circumference is predictive of severity of lower urinary tract symptoms. *BJU Int*. 2012;110:540-5.
- Onat A, Hergenç G, Yüksel H, Can G, Ayhan E, Kaya Z, et al. Neck circumference as a measure of central obesity: associations with metabolic syndrome and obstructive sleep apnea syndrome beyond waist circumference. *Clin Nutr*. 2009;28:46-51.

17. Roehrborn CG, Rosen RC. Medical therapy options for aging men with benign prostatic hyperplasia: focus on alfuzosin 10 mg once daily. *Clin Interv Aging*. 2008;3:511-24.
18. Kupelian V, McVary KT, Kaplan SA, Hall SA, Link CL, Aiyer LP, et al. Association of lower urinary tract symptoms and the metabolic syndrome: results from the Boston area community health survey. *J Urol*. 2013;189(1Suppl): S107-14.
19. McVary K. Lower urinary tract symptoms and sexual dysfunction: epidemiology and pathophysiology. *BJU Int*. 2006;97(Suppl 2):23-8.
20. He Q, Wang Z, Liu G, Daneshgari F, MacLennan GT, Gupta S. Metabolic syndrome, inflammation and lower urinary tract symptoms: possible translational links. *Prostate Cancer Prostatic Dis*. 2016;19:7-13.
21. Russo GI, Vanella L, Castelli T, Cimino S, Reale G, Urzi D, et al. Heme oxygenase levels and metaflammation in benign prostatic hyperplasia patients. *World J Urol*. 2015.
22. DiBello JR, Ioannou C, Rees J, Challacombe B, Maskell J, Choudhury N, et al. Prevalence of metabolic syndrome and its components among men with and without clinical benign prostatic hyperplasia: a large, cross-sectional, UK epidemiological study. *BJU Int*. 2016;117:801-8.
23. Zou C, Gong D, Fang N, Fan Y. Meta-analysis of metabolic syndrome and benign prostatic hyperplasia in Chinese patients. *World J Urol*. 2016;34:281-9.
24. Baillargeon J, Pollock BH, Kristal AR, Bradshaw P, Hernandez J, Basler J, et al. The association of body mass index and prostate-specific antigen in a population-based study. *Cancer*. 2005;103:1092-5.
25. Demir M, Akin Y, Kapakin KAT, Gulum M, Buyukfirat E, Cifti H, et al. Comparison of apoptosis indexes of alpha blockers in prostate: A pilot study. *Eur Urol*. 2015; 14(Suppl): e1420.
26. Rył A, Rotter I, Słojewski M, Jędrzychowska A, Marciniowska Z, Grabowska M, et al. Can metabolic disorders in aging men contribute to prostatic hyperplasia eligible for transurethral resection of the prostate (TURP)? *Int J Environ Res Public Health*. 2015;12:3327-42.
27. Alcaraz A, Hammerer P, Tubaro A, Schröder FH, Castro R. Is there evidence of a relationship between benign prostatic hyperplasia and prostate cancer? Findings of a literature review. *Eur Urol*. 2009;55:864-73.

Correspondence address:

Yigit Akin, MD
Department of Urology
Harran University School of Medicine
63100, Sanliurfa, Turkey
Fax: + 90-414-3183005
E-mail: yigitakin@yahoo.com